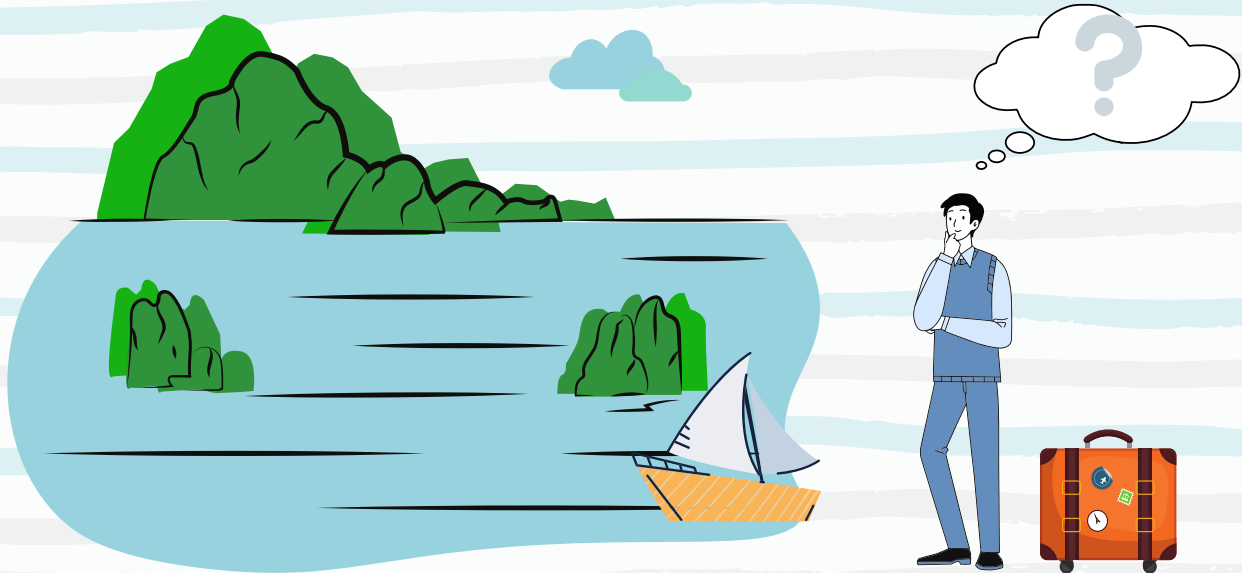


Island Survival Challenge

Inhabiting the Island

Due to your expertise and excellent survival instincts, you have been sent to an uninhabited island for 5 years with the aim of making it suitable for living on, and to help the community thrive.



You haven't been sent alone you can build a team to go with you and help with the job in hand.

Top 10 Team

Choose 10 people to go with you to the island - what skills would you like them to have? They can be specific individuals, or more generic.

You could consider their occupations, like builder or farmer.

Or you could identify other characteristics or transferable skills, like someone strong, or someone to keep spirits up.

Keep in Mind...

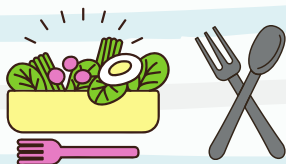
- No-one dies while you are on the island
- God of any type is not permitted - neither are people with magic powers!
- You can only name survivalists (like Bear Grylls) if you can list two of their skills and explain why you would bring them along
- You can take pets - for company, for example - but these do count towards your ten people.

Island Survival Challenge

Inhabiting the Island

Now you have assembled your team, it's time to start thinking about how you will use the space on the island so you have everything you need for a community to grow and flourish.

What's Going Where?



Food

- What sort of food will you produce - animals or vegetables?
- Remember that animals will need more space than plants
- But you should think about the weather and only grow the right plants for the weather.



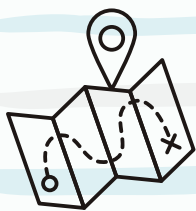
Shelter

- Where will you locate this on your island?
- What materials could you use to build a shelter?



Energy

- What could you use to generate energy on the island?
- Are these renewable energy sources, or non-renewable?
- Where will these be located on the island?



Who's Doing What?

Now you have an idea of how to use the space on your island, where could your teammates work? Which area of the island would they be best for, based on their skills? Who could they work together with? Do you still want to take the same people?



Now Plan it Out!

Now grab some A3 paper and draw out your plans for the island. You could do two maps - a before and after plan for your 5-year stay, or even make a 3D model of your island! Don't forget to give your island a name and location in the world!